

NORTHERN MESIC FOREST COMPOSITION	
botanical name	common name
canopy trees	
<i>Acer rubrum</i>	Red Maple
<i>Juglans cinerea</i>	Butternut
<i>Populus grandidentata</i>	Bigtooth Aspen
<i>Tilia americana</i>	American Linden
<i>Quercus borealis</i>	Northern Red Oak
<i>Quercus ellipsoidalis</i>	Northern Pin Oak
Intermediate ornamental trees	
<i>Amelanchier laevis</i>	Alleghany Serviceberry
<i>Betula lutea</i>	Yellow Birch
<i>Betula papyrifera</i>	Paper Birch
<i>Comus alternifolia</i>	Pagoda Dogwood
<i>Osrya virginiana</i>	American Hophornbeam
<i>Prunus serotina</i>	Black Cherry
<i>Populus tremuloides</i>	Quaking Aspen
<i>Prunus serotina</i>	Black Cherry

evergreen trees	
<i>Abies balsamea</i>	Balsam Fir
<i>Thuja occidentalis</i>	Eastern Arbor Vitae
<i>Pinus banksiana</i>	Jack Pine
<i>Pinus strobus</i>	White pine
<i>Pinus resinosa</i>	Red Pine
shrubs	
<i>Aronia prunifolia</i>	Black Chokecherry
<i>Cornus amomum</i>	Silky Dogwood
<i>Cornus stolonifera</i>	Red Osier Dogwood
<i>Corylus americana</i>	American Hazelnut
<i>Corylus cornuta</i>	Beaked Hazelnut
<i>Diervilla lonicera</i>	Northern bush-honeysuckle
<i>Vaccinium angustifolium</i>	Low-bush Blueberry
<i>Vaccinium myrtilloides</i>	Canada Blueberry
<i>Viburnum acerifolium</i>	Maple-leaved Viburnum
<i>Viburnum opulus</i>	American Cranberry-bush Viburnum
<i>Prunus virginiana</i>	Chokecherry

This list is derived from the Wisconsin State Herbarium and is a partial list of plants that are native to Oneida County, Wisconsin. Herbaceous plants will be derived from an onsite vegetative inventory after approval for this project has been given.

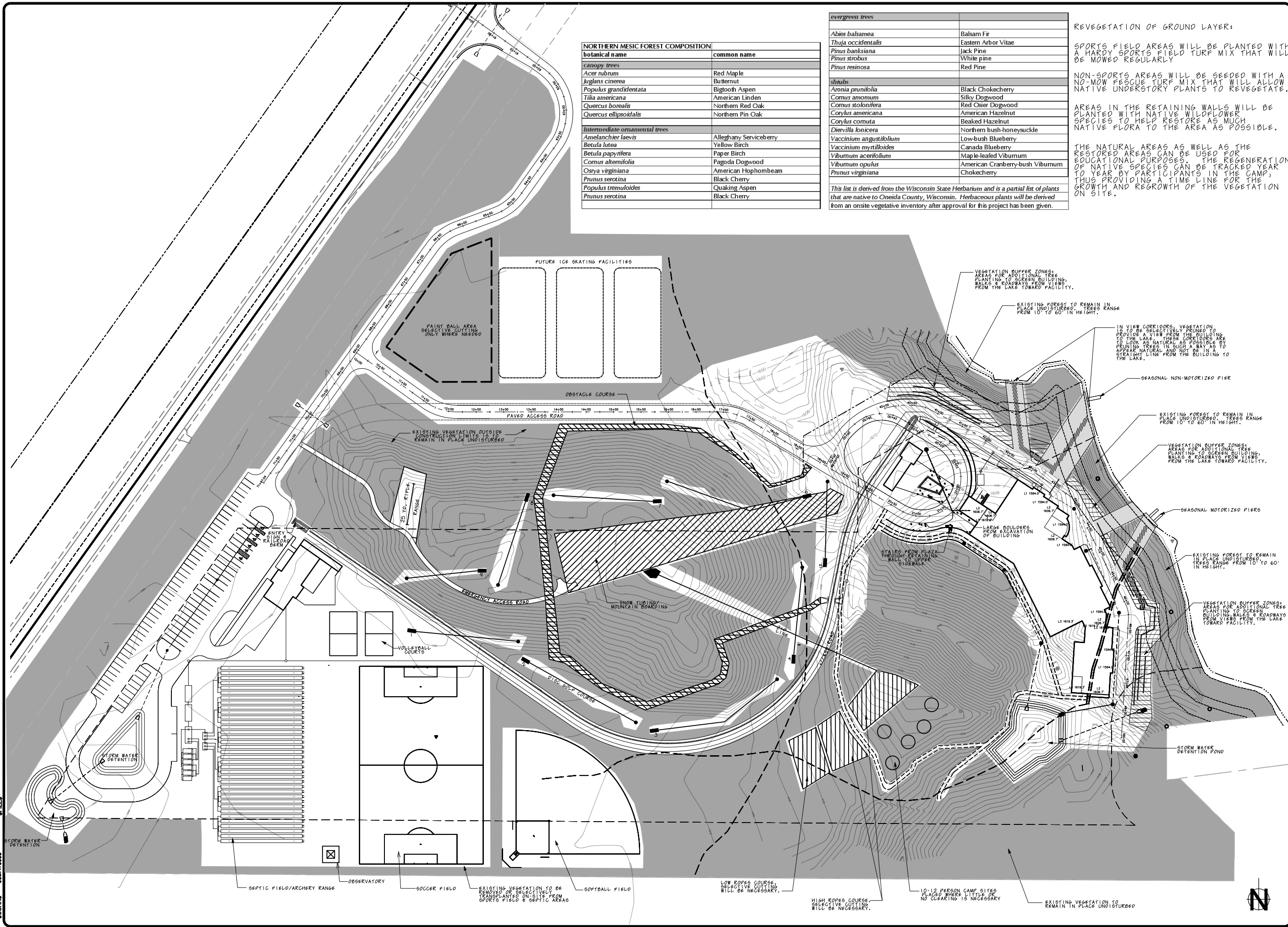
REVEGETATION OF GROUND LAYER:

SPORTS FIELD AREAS WILL BE PLANTED WITH A HARDY SPORTS FIELD TURF MIX THAT WILL BE MOWED REGULARLY

NON-SPORTS AREAS WILL BE SEEDED WITH A NO-MOW PESCUE TURF MIX THAT WILL ALLOW NATIVE UNDERSTORY PLANTS TO REVEGETATE.

AREAS IN THE RETAINING WALLS WILL BE PLANTED WITH NATIVE WILDFLOWER SPECIES TO HELP RESTORE AS MUCH NATIVE FLORA TO THE AREA AS POSSIBLE.

THE NATURAL AREAS AS WELL AS THE RESTORED AREAS CAN BE USED FOR EDUCATIONAL PURPOSES. THE REGENERATION OF NATIVE SPECIES CAN BE TRACKED YEAR TO YEAR BY PARTICIPANTS IN THE CAMP, THUS PROVIDING A TIME LINE FOR THE GROWTH AND REGROWTH OF THE VEGETATION ON SITE.

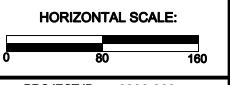


SQUASH LAKE CHRISTIAN BIBLE CAMP

NO.	DATE	DESCRIPTION

DATE OF PREPARATION	
BY	DATE

PROPOSED RECREATION & VEGETATION SITE DEVELOPMENT PLAN



PROJECT ID 2006-068
L-1

REUSE OF DOCUMENTS
THIS DOCUMENT HAS BEEN DEVELOPED FOR A SPECIFIC PROJECT AND SHOULD NOT BE REUSED FOR OTHER PROJECTS WITHOUT THE WRITTEN APPROVAL OF FOTH & VAN DYKE AND ASSOCIATES. UNAPPROVED USE IS THE SOLE RESPONSIBILITY OF THE UNAUTHORIZED USER.

KEN SAKI
DESIGN INC.
LANDSCAPE ARCHITECTS
303 S. PATERSON
SUITE 101
MADISON, WI 53703
Phone: 608-253-3000
Fax: 608-251-6330
www.kssd-ll.com

WISCONSIN
ONEIDA